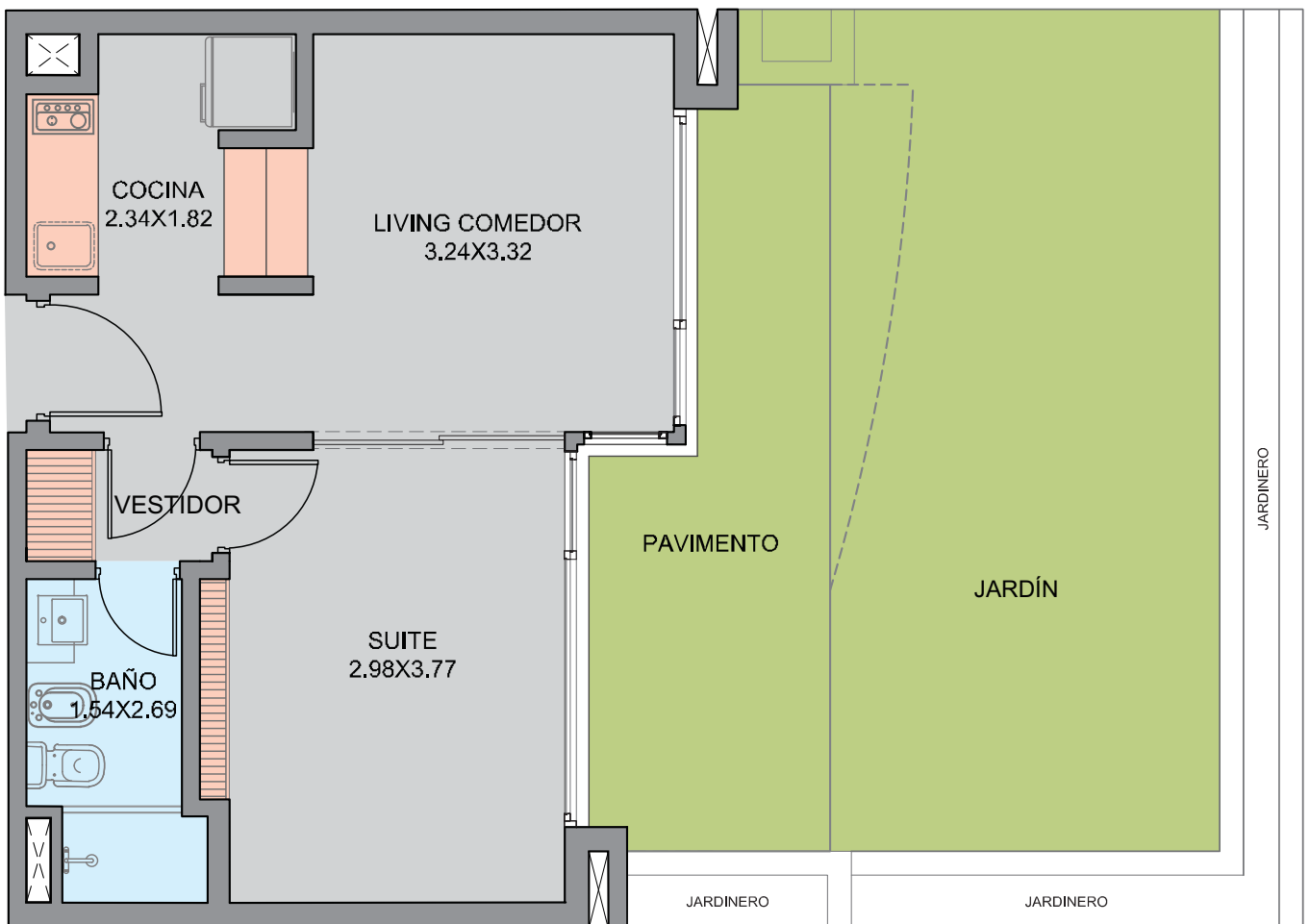
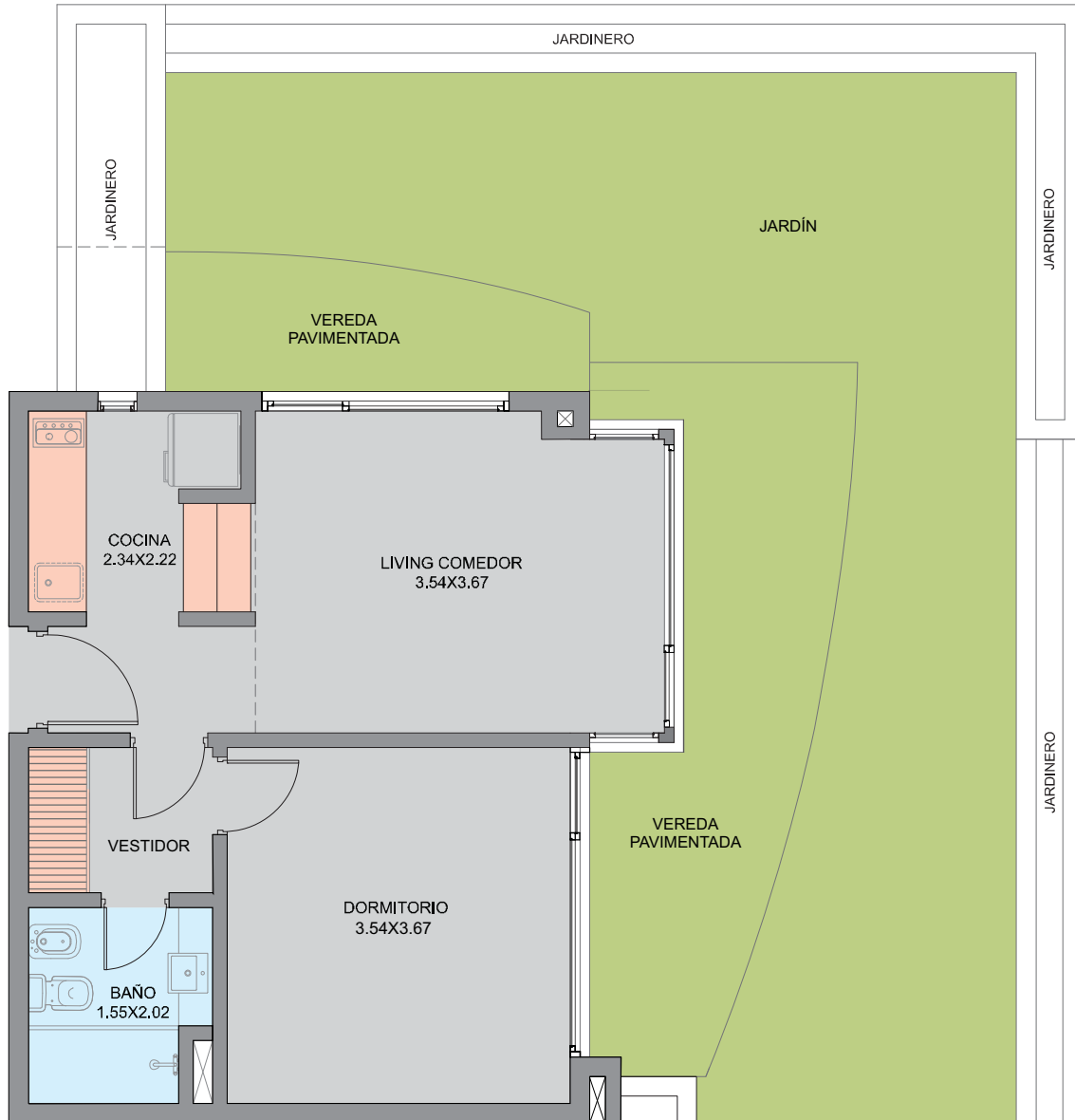


TORRE	PISO	UNIDAD	DORM.	PLANTA (m ²)	TERRAZAS (m ²)	COCHERA (m ²)	PALIER (m ²)	TOTAL (m ²)
5	PB	002	1	40,8	33,4	12,5	10,29	96,99



TORRE	PISO	UNIDAD	DORM.	PLANTA (m ²)	TERRAZAS (m ²)	COCHERA (m ²)	PALIER (m ²)	TOTAL (m ²)
5	PB	001	1	47,65	58,29	12,5	14,69	133,13



TORRE	PISO	UNIDAD	DORM.	PLANTA (m²)	TERRAZAS (m²)	COCHERA (m²)	PALIER (m²)	TOTAL (m²)
5	1 al 4	102-402	1	40,91	11,01	12,5	5,32	69,74

